

## The Ultimate in Height, Reach and Power.

When your job demands both height and reach, enlist Model 1250AJP. With over 60 ft of up and over height and 63 ft of outreach, the 1250AJP is ideal for applications that require high-reach versatility. The exclusive QuikStik® boom design provides faster cycle speeds—115 seconds from ground to elevation—so you can get work done quickly and efficiently. JLG Ultra Series boom lifts come with the only oscillating axle in their boom class, giving you surprising mobility in an ultra-sized package.



# ULTRA SERIES ARTICULATING BOOM LIFTS

## SPECIFICATIONS

### 1250AJP

#### Ultra Series Articulating Boom Lifts

##### Reach Specifications

|                                |                                |                |
|--------------------------------|--------------------------------|----------------|
| Platform Height                | 125 ft (38.1 m)                |                |
| Horizontal Reach               | 63 ft 2 in. (19.25 m)          |                |
| Up and Over Height             | 60 ft 6 in. (18.44 m)          |                |
| Swing                          | 360° Continuous                |                |
| Platform Capacity—Restricted   | 1,000 lb (454 kg)              |                |
| Platform Capacity—Unrestricted | 500 lb (227 kg)                |                |
| Platform Rotator               | 180°                           |                |
| JibPLUS®                       | Length                         | 8 ft (2.44 m)  |
|                                | Horizontal Motion <sup>1</sup> | 125°           |
|                                | Vertical Motion                | 130° (+75/-55) |

##### Dimensional Data

|                     |                             |                     |                      |
|---------------------|-----------------------------|---------------------|----------------------|
| A. Platform Size    | 36 x 96 in. (0.91 x 2.44 m) |                     |                      |
| B. Overall Width    | Axles Retracted             | 8 ft 2 in. (2.49 m) |                      |
|                     | Overall Width               | Axles Extended      | 12 ft 6 in. (3.81 m) |
| C. Tailswing        | 3 ft (91 cm)                |                     |                      |
| D. Stowed Height    | 10 ft (3.05 m)              |                     |                      |
| E. Stowed Length    | 37 ft 7 in. (11.45 m)       |                     |                      |
| F. Wheel Base       | 12 ft 6 in. (3.81 m)        |                     |                      |
| Ground Clearance    | Axle                        | 12 in. (30 cm)      |                      |
|                     | Chassis                     | 25.5 in. (65 cm)    |                      |
| Weight <sup>2</sup> | 44,000 lb (19,958 kg)       |                     |                      |

##### Chassis

|                               |                                    |                      |
|-------------------------------|------------------------------------|----------------------|
| Max Ground Bearing Pressure*  | 100 psi (7.03 kg/cm <sup>2</sup> ) |                      |
| Drive Speed                   | 3.25 mph (5.2 mph)                 |                      |
| Gradeability                  | 45%                                |                      |
| Turning Radius (Inside)       | Axles Retracted                    | 14 ft 5 in. (4.39 m) |
|                               | Axles Extended                     | 8 ft (2.44 m)        |
| Turning Radius (Outside)      | Axles Retracted                    | 22 ft 6 in. (6.86 m) |
|                               | Axles Extended                     | 19 ft 4 in. (5.89 m) |
| Crab Steer Ratio <sup>3</sup> | 1:1                                |                      |
| Axle Oscillation              | 8 in. (20 cm)                      |                      |
| Tires/Type                    | 445/50D710 Foam Filled             |                      |

##### Power Source

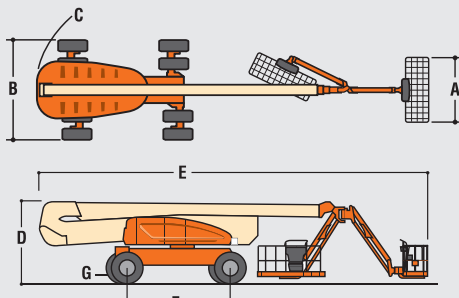
|                              |                   |               |
|------------------------------|-------------------|---------------|
| Diesel Engine                | Deutz TD2011L4    | 75 hp (56 kW) |
| Fuel Tank Capacity           | 31 gal (117 L)    |               |
| Hydraulic Reservoir          | 53 gal (200 L)    |               |
| Auxiliary Power              | 12V DC            |               |
| Generator Nominal/Continuous | 12,000/7,500 Watt |               |

\* Ground bearing pressure applies to standard tires.

1. Capacity is limited to 500 lb (227 kg) when JibPLUS is extended horizontally.

2. Certain options or country standards increase weight.

3. Ratio of forward travel to lateral travel.



For complete specifications, visit [www.jlg.com](http://www.jlg.com)

##### Standard Features

Platform: 36 x 96 in. (0.91 x 2.44 m) Side Entry  
 8 ft (2.44 m) JibPLUS® Boom  
 Selectable Capacity Envelope  
 Inward Swinging Gate  
 180° Hydraulic Platform Rotator  
 AC Receptacle in the Platform  
 SkyPower® Package  
 7500 Watt Generator  
 • 240/120V Single Phase  
 • 240V 3 Phase  
 1/2 in. Air Line to Platform  
 5 Degree Tilt Alarm/Indicator Light  
 All Motion Alarm  
 Swing-Out Engine Tray  
 12V DC Auxiliary Power  
 Hourmeter  
 Control ADE® System  
 Full-time 4WD  
 3 Selectable Steering Modes  
 Drive-out Extendible Axles  
 Oscillating Axle  
 Proportional Controls  
 Gull-Wing Hoods  
 Operator Tool Tray  
 445/50D710 Foam Filled Rim  
 Protector Lug Tread Tires  
 Platform Console Machine Status  
 Light Panel\*  
 Lifting/Tie Down Lugs  
 Engine Distress  
 Warning/Shutdown—  
 Selectable via JLG Analyzer

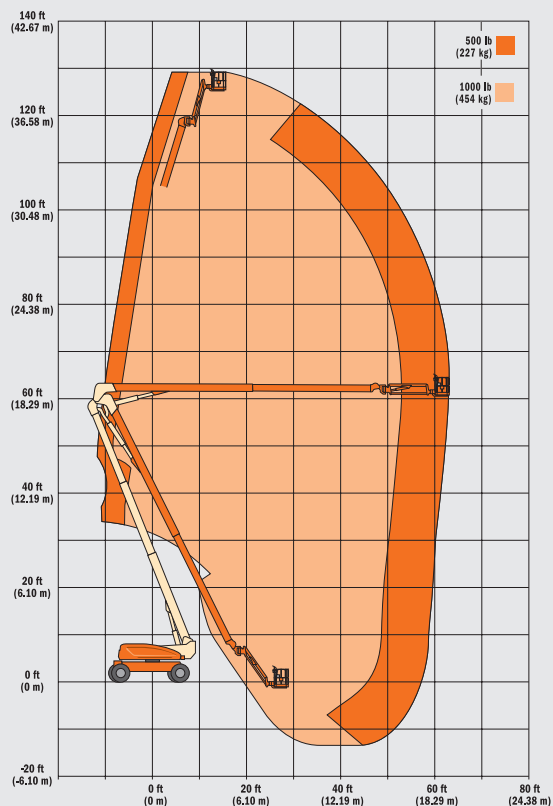
##### Available Options

Platform: 36 x 72 in.  
 Fall-Arrest Platform: 36 x 96 in. (0.91 x 1.83 m) Side Entry  
 Light Package<sup>1</sup>  
 Flashing Beacon  
 Soft-Touch System Platform  
 6 ft/8 ft (1.83 m/2.44 m)  
 Catalytic Muffler  
 Cold Weather Start<sup>2</sup>  
 Hostile Environment Kit<sup>3</sup>  
 Mesh to Top Rail  
 1. Includes platform mounted work lights and drive/backup lights.  
 2. Includes glow plugs, battery heater and oil tank heater.  
 3. Includes console cover, boom wipers and cylinder bellows.

##### Accessory Packages

SkyWelder®  
 SkyCutter®  
 SkyGlazier®  
 Nite Bright®  
 Pipe Racks

\* Provides indicator lights at platform control console for system distress, fuel level, low fuel, 5 degree tilt light and foot switch status.





**JLG Industries, Inc.**  
1 JLG Drive  
McConnellsburg, PA 17233-9533  
Telephone 717-485-5161  
Toll-free in US 877-JLG-LIFT  
Fax 717-485-6417  
[www.jlg.com](http://www.jlg.com)  
An Oshkosh Corporation Company

Form No.: UB-BRO-0208  
Part No.: 3131561  
R07081  
Printed in USA

